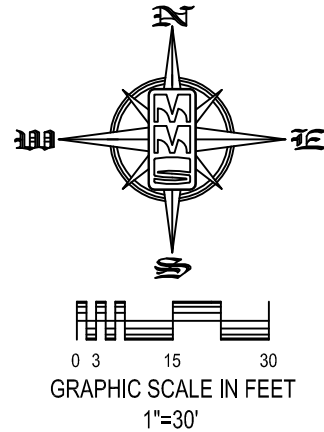
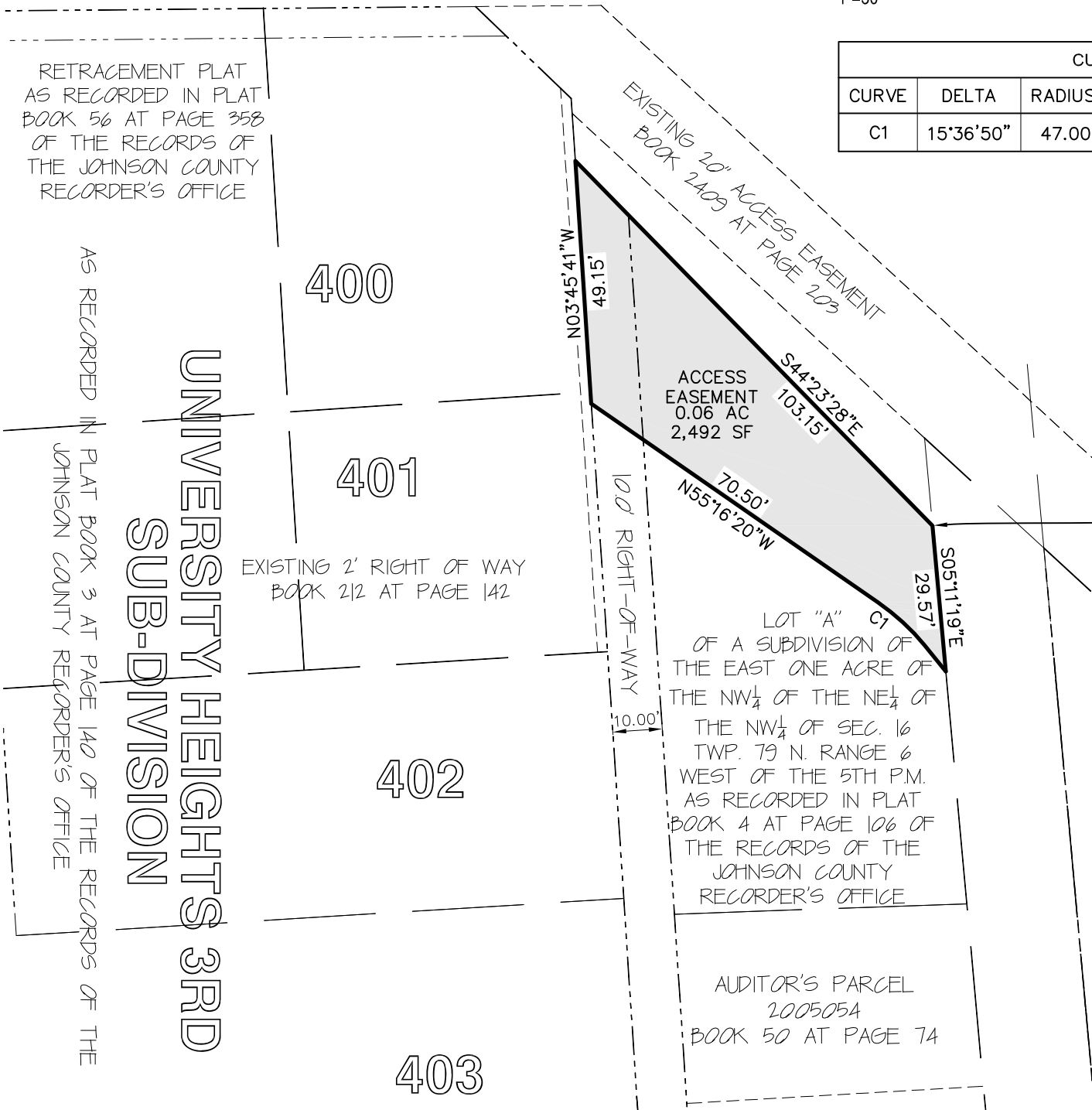


ACCESS EASEMENT

UNIVERSITY HEIGHTS, JOHNSON COUNTY, IOWA



—PREPARED BY AND RETURN TO: MMS CONSULTANTS, INC. 1917 S. GILBERT ST. IOWA CITY, IOWA 52240 (319)351-8282



CURVE SEGMENT TABLE						
CURVE	DELTA	RADIUS	TANGENT	LENGTH	CHORD	BEARING
C1	15°36'50"	47.00'	6.44'	12.81'	12.77'	N47°27'55"W

LEGAL DESCRIPTION – ACCESS EASEMENT

Beginning at the Northeast Corner of Lot "A" of a Subdivision of the East one acre of the NW 1/4 of the NE 1/4 of the NW 1/4 of Section 16, Township 79 North, Range 6 West of the 5th Principal Meridian, as recorded in Plat Book 4 at Page 106 of the Records of the of the Johnson County Recorder's Office; Thence S05°11'19"E, along the East line of said Lot "A", 29.57 feet; Thence Northwesterly, 12.81 feet, along an arc of a 47.00 foot radius curve, concave Southwesterly, whose 12.77 foot chord bears N47°27'55"W; Thence N55°16'20"W, a distance of 70.50 feet, to a point on the East line of Lot 401 of University Heights 3RD Sub-Division; Thence N03°45'41"W, along said East line, 49.15 feet; Thence S44°23'28"E along the Northwesterly extension of the North line of said Lot "A", and the North line of said Lot "A", 103.15 feet, to the Point of Beginning. Said Access Easement contains 0.06 acre (2,592 square feet) and is subject to easements and restrictions of record.

MMS

CIVIL ENGINEERS
LAND PLANNERS
LAND SURVEYORS
LANDSCAPE ARCHITECTS
ENVIRONMENTAL SPECIALISTS

1917 S. GILBERT ST.
IOWA CITY, IOWA 52240
(319) 351-8282
www.mmsconsultants.net

Date	Revision

EASEMENT PLAT ACCESS EASEMENT

A PORTION OF THE NORTHEAST CORNER OF LOT "A" OF A SUBDIVISION OF THE EAST ONE ACRE OF THE NW 1/4 OF THE NE 1/4 OF THE NW 1/4 OF SECTION 16, TOWNSHIP 79 NORTH, RANGE 6 WEST OF THE 5TH PRINCIPAL MERIDIAN, UNIVERSITY HEIGHTS, JOHNSON COUNTY, IOWA.
MMS CONSULTANTS, INC.

Date: 12/15/2017	
Designed by: BTM	Field Book No: 1179
Drawn by: CAK	Scale: 1"=30'
Checked by: GDM	Sheet No: 1
Project No: IC 0986-057	of: 1

I hereby certify that this land surveying document was prepared and the related survey work was performed by me or under my direct personal supervision and that I am a duly licensed Professional Land Surveyor under the laws of the State of Iowa.

_____, 20____

GLEN D. MEISNER
L.S. Iowa Lic. No. 8165

My license renewal date is December 31, 20____.

Pages or sheets covered by this seal: _____

SEAL